

# **Fusion1 Mounting Instructions with TDA4VM EVM**

518526-0001R

## Required Hardware J721E EVM/Fusion1 Mounting

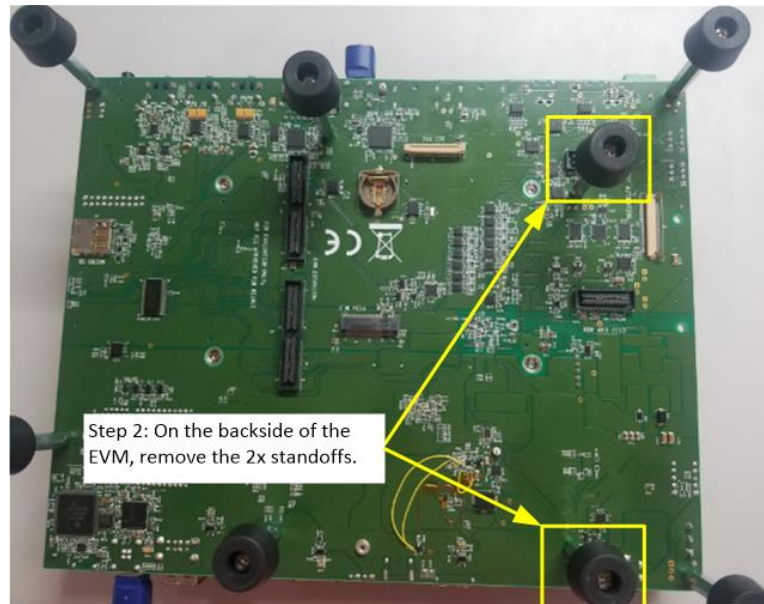
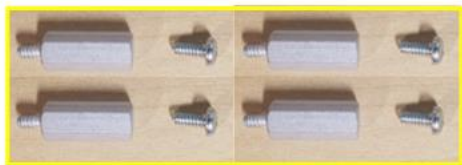
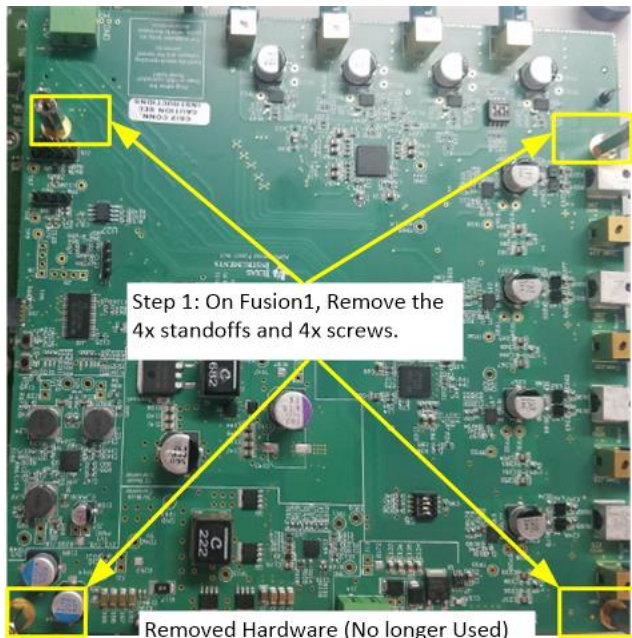


HEX STAND OFF 4-40 -  
QTY 10

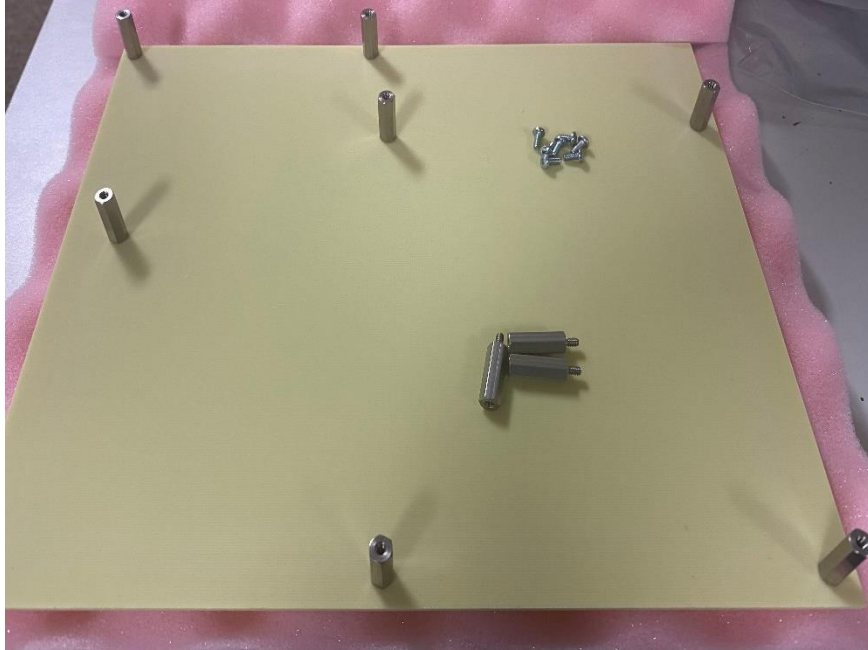


PHILLIPS 4-40 SCREWS - QTY 7

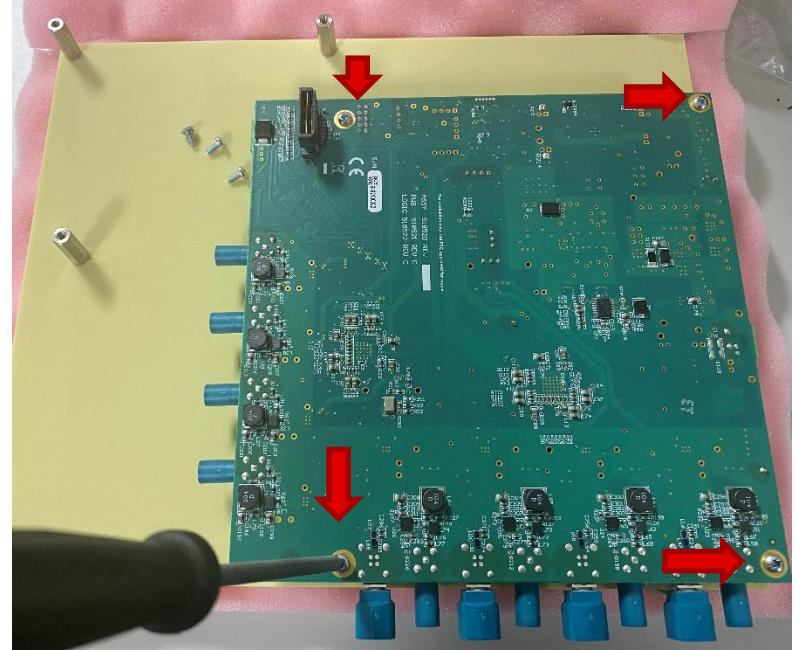
# TDA4VM /Fusion1 Mounting Instructions (Steps 1-2)



## TDA4VM /Fusion1 Mounting Instructions (Steps 3-4)

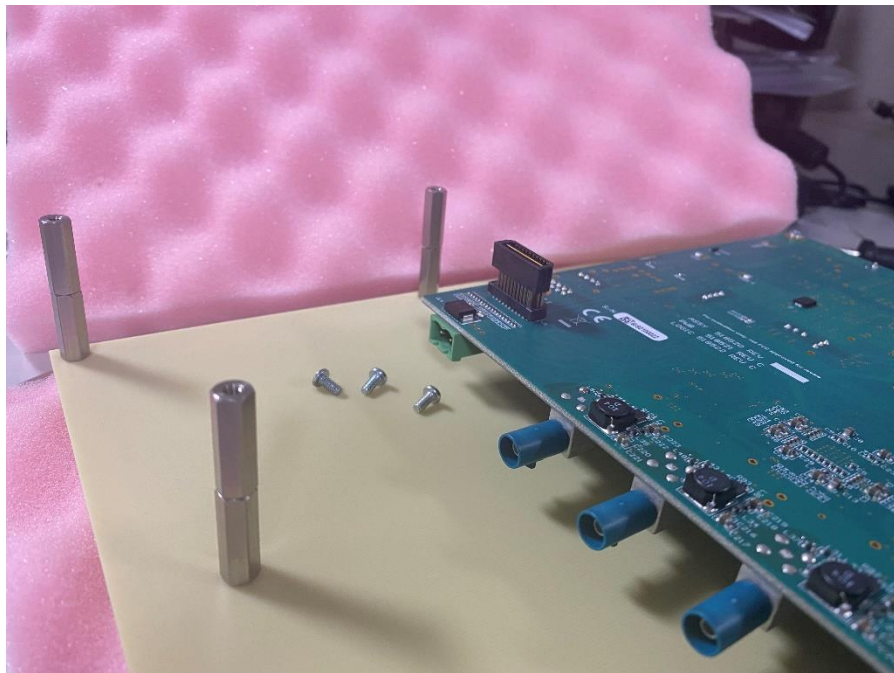


Step – 3 Install 7 standoff on the threaded mounting holes and hand tighten( stand off should be installed on the opposite side of where the rubber feet is located on the plate

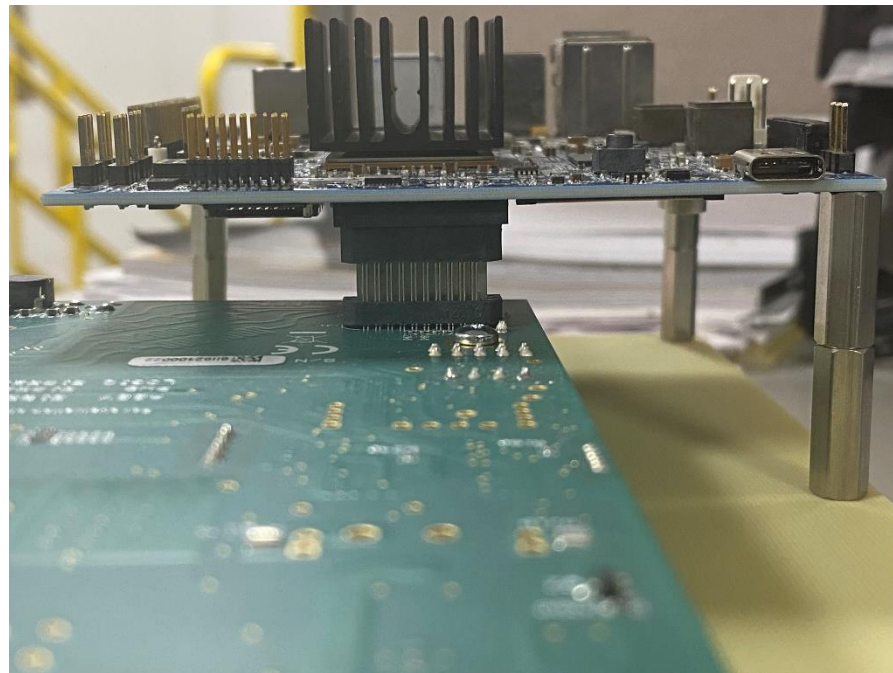


Step – 4 Position the fusion board on the stand off as shown above. Install the 4-4-0 screws on the stand off to secure the board using a Philips screw driver

## TDA4VM /Fusion1 Mounting Instructions (Steps 4-5)



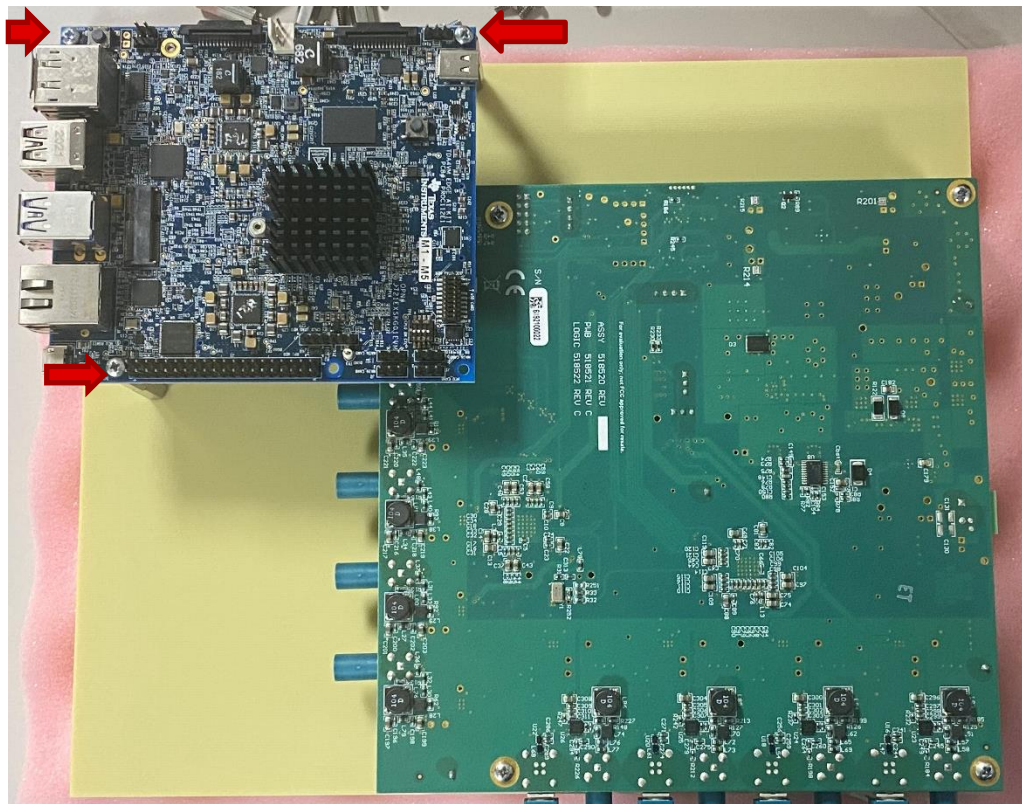
Step – 4 Install 3 standoff on the remaining three stand off on the board and hand tighten



Step 5 b– position the TDA 4 properly above the J1 connector on the fusion boards and mate with the expansion connector on the TDA4EVM. If properly seated the 3 mounting holes on the corners of the EVM will align with the stand off.

## TDA4VM /Fusion1 Mounting Instructions (Steps 6)

Use the 3 4-40 screws to secure the TDA4EVM to the stand offs using a Philips screw driver.

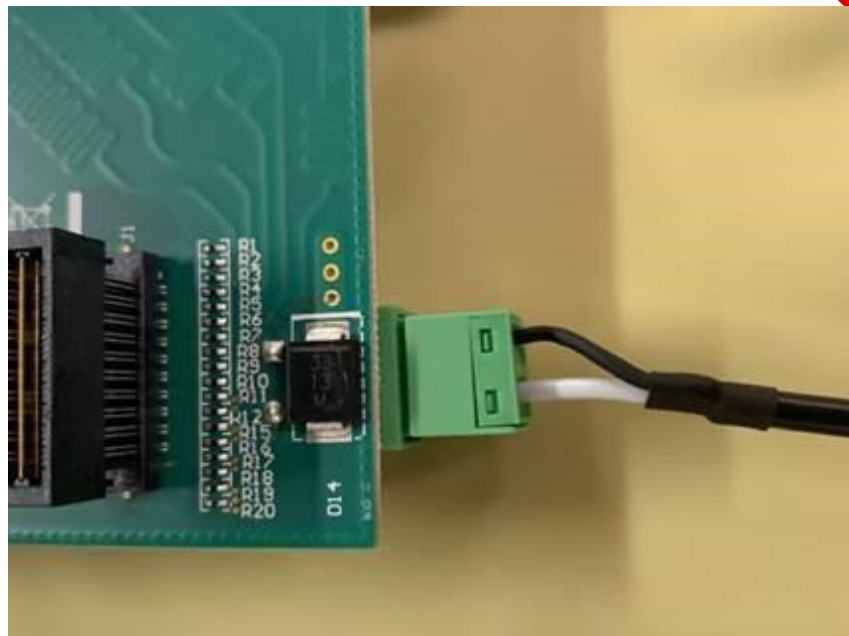


# Applying Power to fusion board

K3



Attach the white and black cable to the connector as shown above



Plug in the green Power connector **\*before\*** assembling the Starter Kit to bracket for easy installation of the whole assembly